

HV JUICE

CHANNEL




This Issue

- HOOKSTICK DISCONNECT SWITCHES**
PAGE 2
- HAUFF TECHNIK SEALING SYSTEMS**
PAGE 4
- NEW! AIRBREAK SWITCH**
PAGE 7



**Wedge
Pressure
Technology**
PAGE 3

www.transnet.co.nz





ASK THE EXPERTS
WORLD LEADERS
 IN THE SUPPLY OF
Hookstick Disconnect Switches



INLINE DISCONNECT SWITCH

Inline Disconnect Switch, 11, 22, & 33kV, 900A, 200kV BIL silicone insulator, marine grade. (316SS hardware and brackets. All

Aluminium components nickel plated, all hex nuts silicone bronze.)

KEY FEATURES

- 900A, 11, 22, & 33kV
- Polymer Insulator
- Silver plated copper blades, brass contact & hinge
- Aluminium and HDG Steel Bases
- Integral 90° blade stop
- Tin plated copper terminals
- Pull to Open / Pull to Close operation
- All stainless steel option

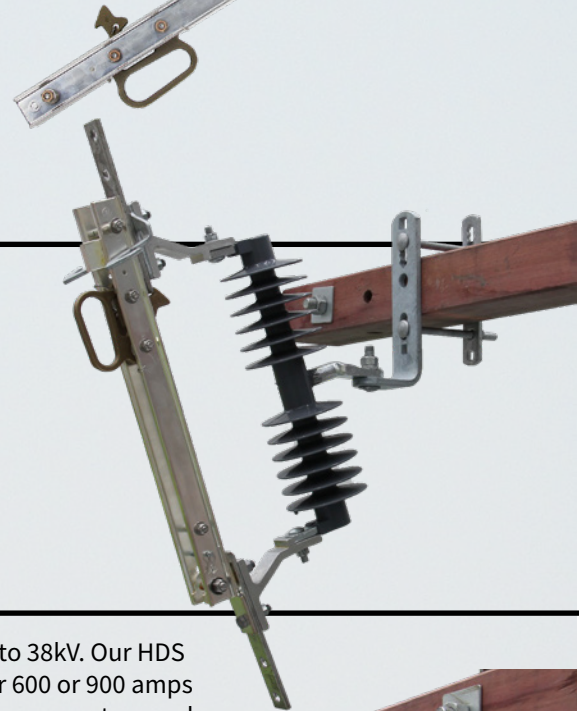


SINGLE INSULATED DISCONNECT SWITCH

This Single Insulated Disconnect Switch is available in porcelain or silicone and has NEMA bracket options. 11 & 22kV, 600 & 900A.

KEY FEATURES

- 600 or 900A, 11 & 22kV
- Porcelain or Silicone Insulator
- Available with NEMA or Extended NEMA bracket



ISOLATING DISCONNECT SWITCH

The Aluma-Form “HDS” switches are a best in class design that is simple and reliable. Our hookstick operated disconnects feature the following:

KEY FEATURES

- Silver plated blade assembly that provides superior electrical conductivity
- Blade design that provides mechanical rigidity
- Silver plated contact designed to maintain contact pressure
- Positive latch, effective pry-out mechanism
- Integral 90° blade stop
- RUS Approved
- Precision formed hinge terminal for low resistance connection

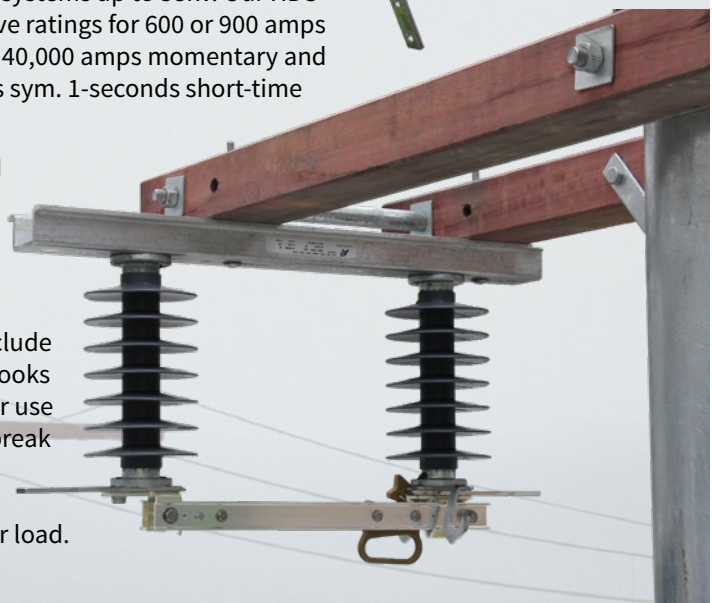
APPLICATION

Manual switching of overhead lines on electrical

distribution systems up to 38kV. Our HDS switches have ratings for 600 or 900 amps continuous, 40,000 amps momentary and 25,000 amps sym. 1-second short-time withstand.

OPERATION

All Aluma-Form “HDS” Disconnect Switches include loadbreak hooks which are for use with a loadbreak tool for opening the switch under load.



AMPACT - TAP THE TECHNOLOGY BEHIND THE WORLD'S MOST RELIABLE TAP



BENEFITS OF THE AMPACT SYSTEM

- Range taking, covers connections from 4.8mm OD to 23.20mm OD in copper, aluminium and bimetallic connections*
- Gel covers available to ensure integrity of the connection in harsh NZ environments (especially in bi-metal situations)
- Industry standard tooling - used throughout NZ
- Low resistance connection
- No variables when using the proven "AMPACT System"
- The same quality connection every time
- Removable & reusable with no damage to conductors
- Lightweight - easy to use
- Fast installation time

*When installed & covered in accordance with manufacturer's instructions



PRODUCT FEATURES

Controlled tapers ensure permanent interlocking of components for repeatability and variance prevention

Design maintains lower resistance throughout connector service life

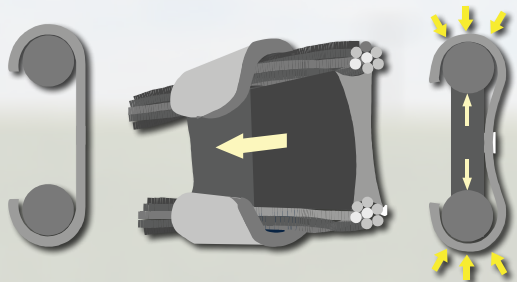
Unique grain structure produces increased strength and lifetime reliability

Inhibitor with abrasive particles cleans contact surfaces to reduce corrosion and line loss

Tap spring member flexes to maintain constant contact pressure during thermal expansion/contraction

Integral locking feature prevents environmental loosening

IT'S ALL ABOUT HOW IT ARCHES ITS BACK - spring-action "C" shaped connector housing generates constant pressure between the conductors and tapered wedge compensating for mechanical fatigue and thermal cycling



Consistent installation



OVER
2.8 MILLION
INSTALLATIONS
PER YEAR*

EXCEEDS
REQUIREMENTS OF
INTERNATIONAL
STANDARD ANSI
C119.4 CLASS AA

ENGINEERED
TOOLING
+
CORRECT
FORCE
=
PERFECT
CONNECTION!



The AMPACT Connector's unique spring ability reduces resistance, helping the connector and connection remain cooler.

AMP FROM TE CONNECTIVITY - TRUST THE INVENTORS OF WEDGE PRESSURE CONNECTORS!

*Worldwide

AMP





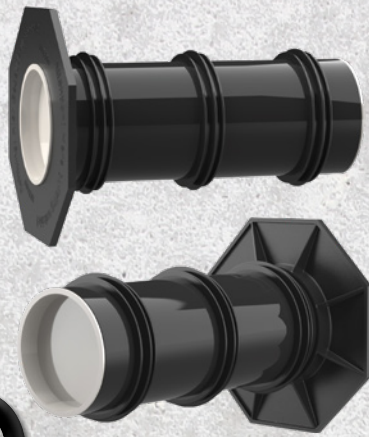
**DON'T
LIVE
WITH
A
LEAK**

Plastic flange for retrofit dowelling HSI 150-DFK

Used when there is water coming in between the conduit and the concrete wall that it's installed in, the flange seals onto the wall outside of the conduit so any water tracking between the wall and conduit is caught in the flange.

FEATURES

- With integrated spirit level
- System seal can be connected (e.g. cable duct connection or cable seal)
- Can be installed on container walls
- Form-closed surface seal
- Glass fibre reinforced polyamide flange
- EPDM surface seal
- Gastight and watertight to 2.5 bar



Is the seal system you use tested?

Hauff Technik have a fully tested sealing system to meet every possible wall penetration requirement, no matter if it's existing issues or brand new installations.

- Hauff Technik is tested to DIN 18533 W1.1-E, DIN 18533 W1.2-E, DIN 18533 W2.1-E
- Waterproof concrete stress class 1, Waterproof concrete stress class 2

Universal Wall Sleeve - for all wall types UFR

FEATURES

- Lightweight
- Simple installation in the formwork
- Can be cut to length on site
- Can be used in all types of wall including element constructions

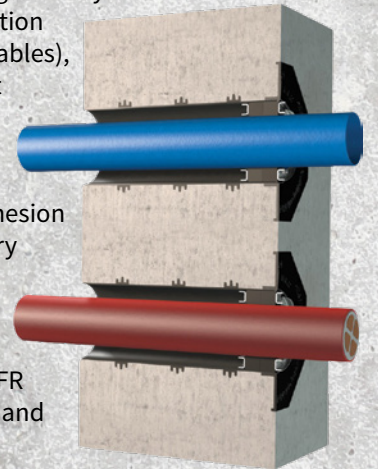


For New Installations:

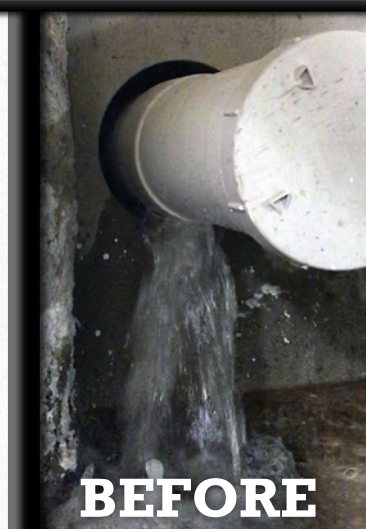
It's simple: install a Universal wall sleeve into your formwork or specify into tilt slab production. When it comes time for tanking or waterproof membrane to be applied the installer just runs their waterproofing over the integrated "patch flange".

This system allows for sealing not only the inside of the duct with any cable combination (quantity and different size cables), but also ensures a watertight seal between the duct and the concrete itself, where many leaks are generated currently due to the poor adhesion of concrete to current industry standard ducts.

Next it's simply a matter of installing a standard Hauff Technik cable seal into the UFR and you now have a gastight and water tight seal to 2.5 bar.



Flange with split system cover installed





LIGHTER. SAFER. STRONGER.

CHANNELL BULK PITS & SHIELD LIDS

With over 90 years of experience Channell has developed the most advanced pit and chamber technology in the world! Channell's BULK and SHIELD patented designs offer safety benefits never before contemplated.

BULK PITS

BULK's lightweight design and reduced weight compared to concrete, polymer concrete, and many other body materials protects the safety of installers while shortening installation times. Additionally, cutting BULK body ducts in the field produces no harmful dust contaminants which could lead to installer respiratory issues.

- HDPE body for easy field alteration while eliminating water absorption & material degradation

- Ribbed sidewall secures body into backfill soil & eliminates sidewall deflection

- Straight wall design improves lid load strength
- Flush mounted sidewall racks & mounting studs (BULK 1-9)
- Winterised cable drop side (BULK 3-9)
- 4 lifting points & 8 multiple conduit points at each end (BULK 9)



SHIELD LIDS

- Patented Anti-Slip tread design
- Anti-trip cover
- Designed for "Deliberate Traffic" - slow moving vehicular applications
- Designed to meet or exceed **150kN** load
- Superior Fatigue Resistance (EST)[™] - SHIELD Lids exceed EST **3,000,000** cycles of design loads without failure
- Extremely durable/fire retardant/chemical resistant/UV stable/WiFi transparent
- SHIELD is stronger than concrete, polymer concrete and of similar strength to steel
- Non-seizing bolt system allows field replacement



TESTED TO THE HIGHEST STANDARDS

Safety always comes first, which is why BULK and SHIELD are tested to the highest standards available in the global market.

- AS/NZ 3996:2006
 - Class B (Pathway)
 - Class C (Roadway)
- European - EN124 Class B125/C250
- AS/NZ 4586



BULK ④



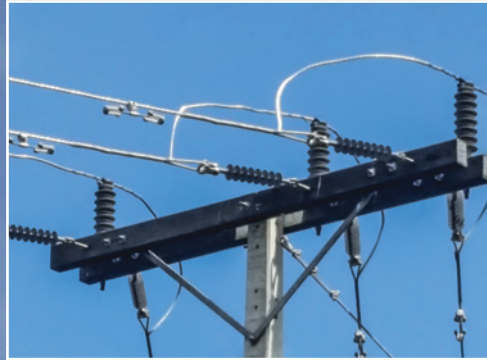
FIND THE PIT THAT SUITS YOUR NEEDS



BULK ⑦

BULK ⑨





33kV Polymer Posts - Taranaki



33kV Polymer Posts - Otago



66kV Polymer Posts - Southland



11kV Polymer Posts - King Country

POLYMER INSULATORS



TIE TOP



CLAMP TOP

Raychem RLP polymeric line post insulators combine mechanical strength with excellent pollution performance. They consist of protruded fibreglass rods and non-tracking polymer housing directly bonded to metal end fittings. Corrosion resistant end fittings are crimped to the pultruded fibreglass core to allow the transition of mechanical loading to the line and mounting structure.

A patented crimp control technology monitors for damage to the fibreglass rod while achieving maximum mechanical strength. The direct bonding of the polymer housing to the metal end fitting results in an ideal moisture barrier in the sensitive interface area.

FEATURES

- Composite design
- Silicone & EVA options available
- Lightweight – easy installation
- Vandal and break resistant
- Impact resistant
- High tracking and erosion resistance
- Excellent performance under polluted conditions
- Reduced maintenance costs
- Direct bonding to end fitting offers moisture barrier on fibreglass rod
- Tie top & clamp top options
- Lightweight range taking Alu clamp
- M20 pin



TE Connectivity offer a 25 year manufacturing warranty on all TE branded Porcelain Insulators up to 66kV. In the event a TE insulator from this range is found to demonstrate manufacturing defects, TE will supply a replacement product free of charge. Terms and conditions do apply, to learn more about this offer please contact TransNet (0800 442 182, 09 274 3340) or TE Connectivity (09 634 4580) directly.



NEW! ALLIED INSULATORS AIRBREAK SWITCHES



Problems with insulators breaking? Fix with proven durable UK designed & manufactured ABS



Made in the UK

Possibly the fastest and easiest ABS to install on the NZ market today

Ground mounted handles or adjustable to any height on your pole

Plain break arcing horns or load break interrupter head options available

Available in all voltages 11kV-36kV and ratings up to 630A

Manufactured and tested in accordance with IEC30265-1, IEC60694, IEC 62271, BSEN60129, and ENATS 41-36

Easy retrofit for replacement of standard NZ ABS on double crossarms

Extra wide clearance when open - no issues with MAD when earthing deenergised side of the ABS

Meets requirements of ENA Engineering Recommendation G18



Operational Category (ENA Engineering Recommendation G18)

CAT 2

CAT 0

| MECHANISM | DEPENDENT MANUAL | INDEPENDENT MANUAL |
|-----------------------------------|------------------|--------------------|
| ARC CONTROL | ARCING HORNS | INTERRUPTER HEADS |
| RATED CONTROL (UR) | 12KV/36V | |
| NUMBER OF POLES | 3 | |
| FREQUENCY (F) | 50/60HZ | |
| RATED NORMAL CURRENT (LR) | 630A | |
| RATED PEAK WITHSTAND CURRENT (LP) | 40KA | |



Allied Insulators

More questions? Contact your Transnet rep or our office on 0800 442 182 to book an on site demonstration.

Ph 0800 442 182
+64 9 274 3340

sales@transnet.co.nz

www.transnet.co.nz

It's The Tail End Of The Year

New Year, New Balmoral Lion Tails



TransNet New Zealand Ltd

Auckland

78 Cryers Road
East Tamaki
Auckland
NEW ZEALAND
Ph 0800 442 182
Fax 0800 442 183
PO Box 39 383
Howick, Auckland

Wellington

10 Petone Ave
Petone
Wellington
NEW ZEALAND
Ph 04 576 2530
Fax 04 576 0040
PO Box 39 383
Howick, Auckland

NEW ZEALAND

sales@transnet.co.nz

TransNet Tonga

Ma'ufanga

Small Industries
Ma'ufanga
TONGA
Ph +67 627 939
Fax +67 627 976
PO Box 2932
Nuku'alofa

TONGA

transnet@kalianet.to

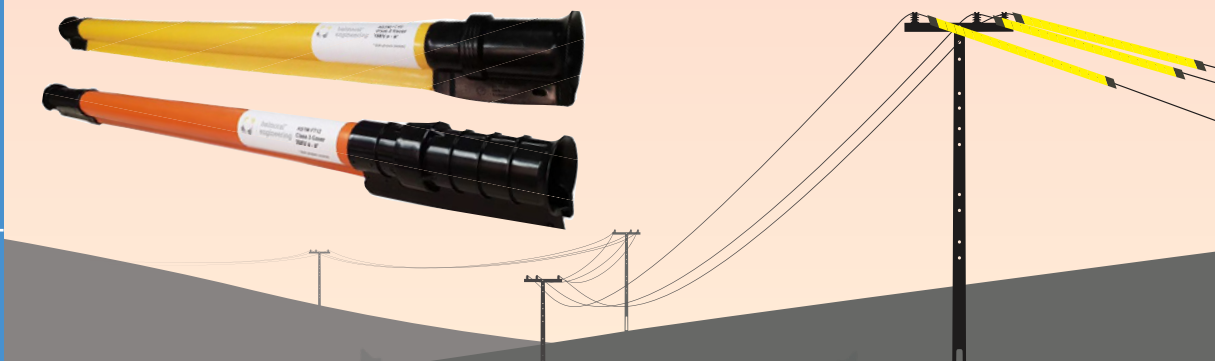
These new Polyethylene Line Guards come in 15kV & 26kV and are an excellent visual warning for power lines & wires, as well as provide mechanical protection and electrical insulation. Balmoral products are backed by decades of engineering to ensure the highest quality and safety standards.

Features

- Can be joined/coupled together
 - Lightweight
 - Easy to install
 - Weather resistant
 - 2m male/female lengths PE,
- Yellow or orange outer, black inner safety feature
 - ASTM F712, Class 2 15KV or Class 3 26KV*
 - Robust design and construction

* Both phases covered

| Cat No. | Class | Colour | Dimensions |
|---------|---------------|--------|-----------------------|
| DB35B | CLASS 3, 26KV | ORANGE | 35MM I.D. X 2M LENGTH |
| DB45B | CLASS 2, 15KV | YELLOW | 45MM I.D. X 2M LENGTH |



MERRY CHRISTMAS!

From everyone here at TransNet we'd like to wish you and your family a happy and safe summer holiday.

Don't forget that although we never close courier companies reduce their runs over the break, so order early to ensure prompt delivery. We won't be in the office on the stats, but you can still call us on 0800 442 182 for assistance.

Don't forget the sunscreen, and we'll see you again in 2019!

The Team at TransNet

TransNet NZ Ltd has made every reasonable effort to ensure the accuracy of this information and it is to the best of our knowledge correct and reliable. Under no circumstances does this constitute an assurance of any particular quality or performance and users should independently evaluate the suitability of products for their desired application. All information in this publication including pricing, drawings, illustrations, images and graphic designs are reflections of our current understanding. TransNet NZ Ltd reserves the right to make any adjustment to this information at any time. Our liability for the products outlined in this publication is set forth in our standard terms and conditions of trade. In case of any potential ambiguities or questions, please contact us for clarification.



NEW ZEALAND OWNED